

WELCOME

To the Iron Horse Trail Central Section Public Information Centre

Introduction to The Iron Horse Trail

The Iron Horse Trail is a 4.4 kilometre multi-use pathway connecting the City of Waterloo and the City of Kitchener from Union Ave. to Ottawa St. The corridor was established in 1997 following the closure of the Grand River Railway in 1993. The multi-use pathway is a significant portion of the city's off-road transportation network. The corridor is a primary commuter route through Downtown Kitchener, allowing residents and visitors the opportunity to travel to work, school, or other destinations by walking or cycling.

The Multi-use Pathways and Trails Master Plan (2012) identifies the Iron Horse Trail as a priority north-south route for active transportation and contains a variety of policy recommendations that would be addressed through the development of an improvement strategy, including signage and wayfinding, road crossing improvements and network connectivity. With urban intensification growth in Kitchener and the incoming ION rapid transit system, there is also a need to understand how the Iron Horse Trail will shape the city's future.

Central Area Victoria Street to Queen Street

An Iron Horse Trail Improvement Strategy was completed by the City of Kitchener and approved by Council in November 2015 with funding for the implementation of the Central Section approved for 2016.

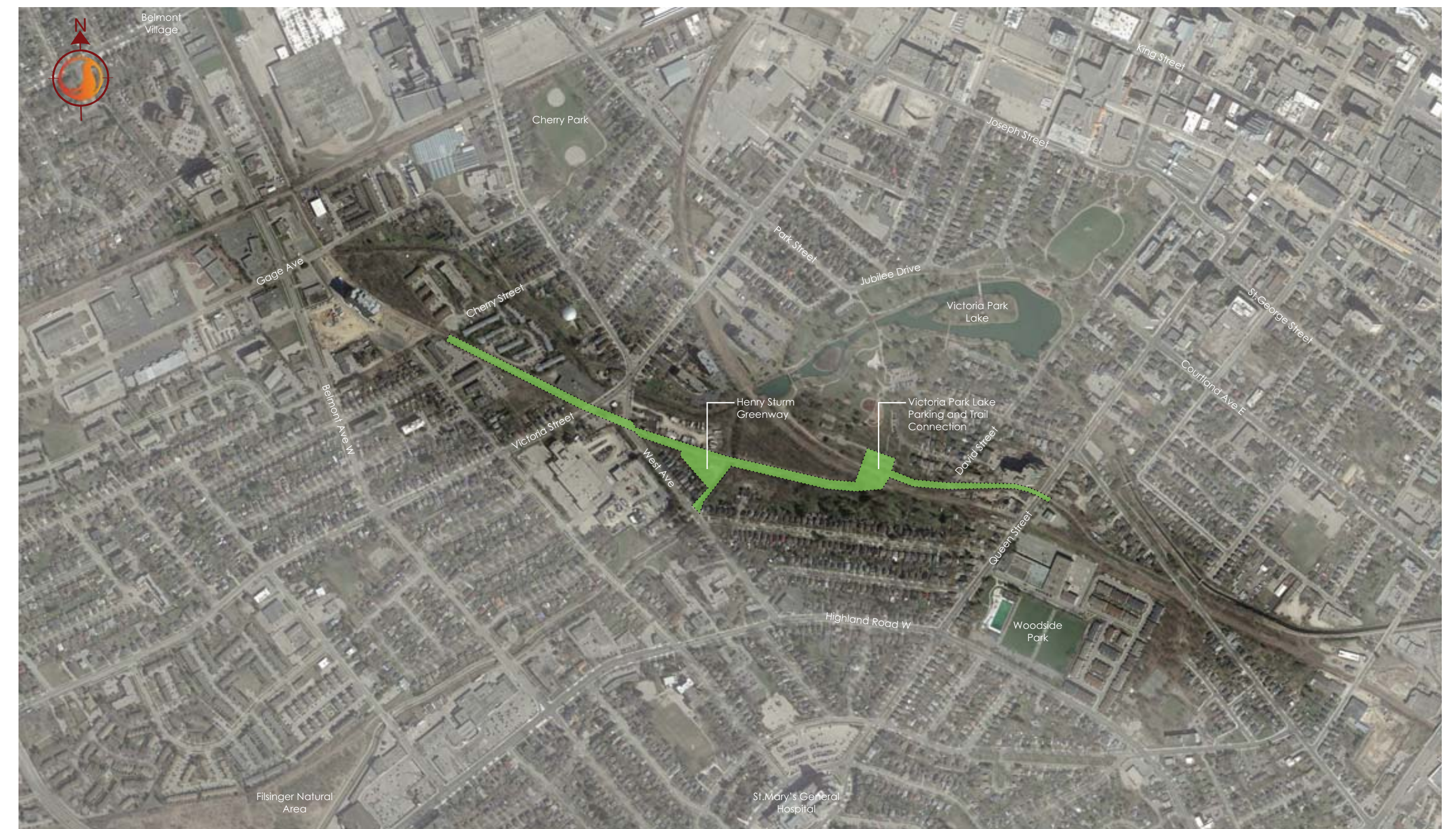
The central section is approximately 1.0km runs from Victoria St. S to Queen St. S. and includes:

- 4 Roadway Crossings – Victoria, West, David, Queen
- 1 Railway Crossing
- 1 Pedestrian Bridge – Trestle Bridge
- Entrance to Victoria Park through Parking Lot
- Henry Sturm Open Space

The Improvement Strategy aimed to develop a vision and implementation plan for the 4.4 kilometres of well used pathway. The concept design shown at this Public Information Centre reflects the goals and vision developed through the strategy. Staff are looking for feedback and commentary on the concept plan to refine the design and move forward into construction planning.

To view the entire concept plan from Victoria to Queen please visit the Engage Kitchener website (www.kitchener.ca/ironhorsetrail) or use the QR on this panel.

City of Kitchener



Thank you for visiting the Iron Horse Trail Central Section Public Information Centre. You can help us with this project by completing the following:

1. Sign in by filling out the attendance form.
2. Provide input by filling out the Survey/Questionnaire
3. Ask questions!
4. Follow up on the Engage Kitchener website at: www.kitchener.ca/ironhorsetrail

Your input to the project is critical to making this trail a success within our community!



For more information use the QR Code above to visit the project website.

