



Map 3 Land Use

City of Kitchener Official Plan A complete and healthy Kitchener

Legend

- Refer to Secondary Plan For Detail
- Urban Growth Centre (Downtown)
Refer to Map 4
- Area Under Deferral
- Low Rise Residential
- Medium Rise Residential
- High Rise Residential
- Mixed Use
- Commercial Campus
- Commercial
- Heavy Industrial Employment
- General Industrial Employment
- Business Park Employment
- Institutional
- Prime Agriculture
- Rural
- Natural Heritage Conservation
- Open Space
- Major Infrastructure and Utilities

Railway

Railway

Major and Minor Roads

Existing

Planned

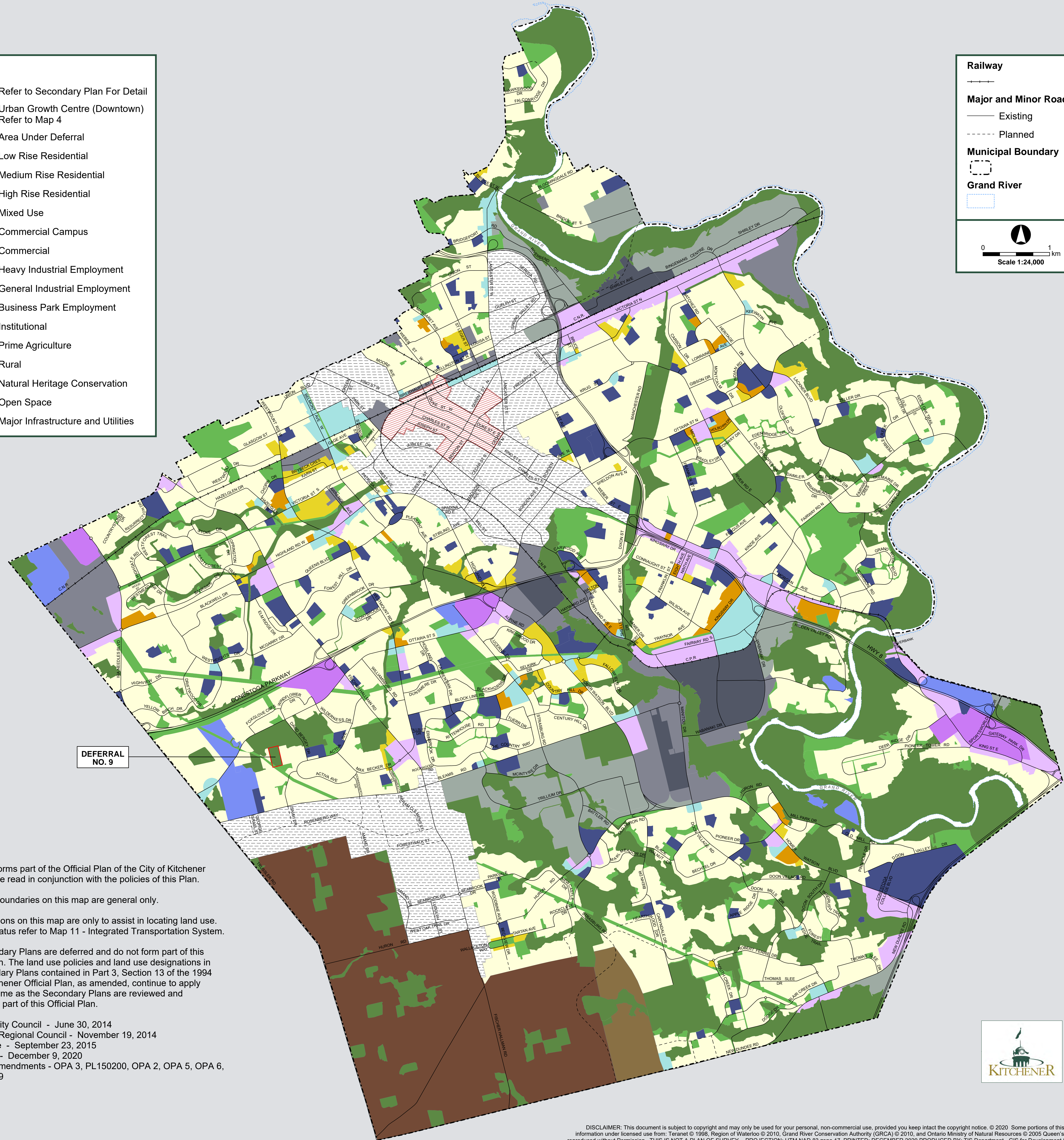
Municipal Boundary

Municipal Boundary

Grand River

Grand River

0 1 km
Scale 1:24,000



DEFERRAL
NO. 9

- Notes:
1. This map forms part of the Official Plan of the City of Kitchener and must be read in conjunction with the policies of this Plan.
 2. Land use boundaries on this map are general only.
 3. Road locations on this map are only to assist in locating land use. For road status refer to Map 11 - Integrated Transportation System.
 4. The Secondary Plans are deferred and do not form part of this Official Plan. The land use policies and land use designations in the Secondary Plans contained in Part 3, Section 13 of the 1994 City of Kitchener Official Plan, as amended, continue to apply until such time as the Secondary Plans are reviewed and adopted as part of this Official Plan.

Adopted by City Council - June 30, 2014
 Approved by Regional Council - November 19, 2014
 Effective Date - September 23, 2015
 Last Revised - December 9, 2020
 Revised by Amendments - OPA 3, PL150200, OPA 2, OPA 5, OPA 6, OPA 7, OPA 9



DISCLAIMER: This document is subject to copyright and may only be used for your personal, non-commercial use, provided you keep intact the copyright notice. © 2020 Some portions of this publication are produced using information under licensed use from: Teranet © 1998, Region of Waterloo © 2010, Grand River Conservation Authority (GRCA) © 2010, and Ontario Ministry of Natural Resources © 2005 Queen's Printer Ontario and may not be reproduced without Permission. THIS IS NOT A PLAN OF SURVEY - PROJECTION: UTM NAD 83 zone 17. PRINTED: DECEMBER 2020 PRODUCED BY: TIS Department - GIS for Development Services Department - Planning