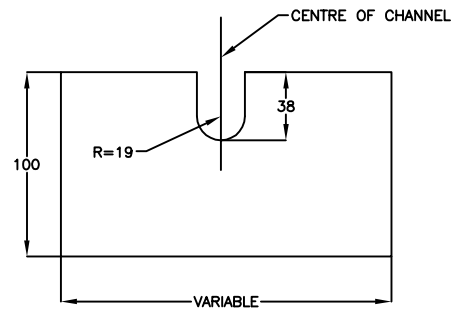
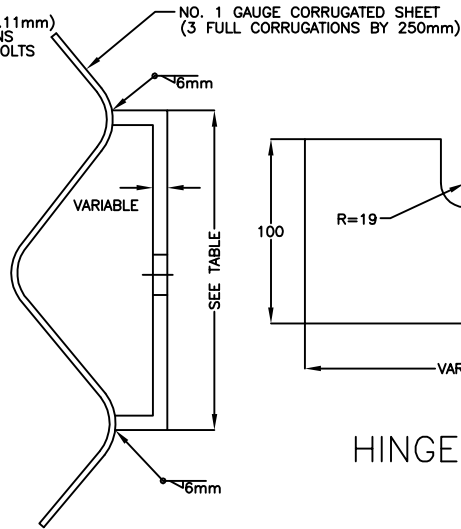
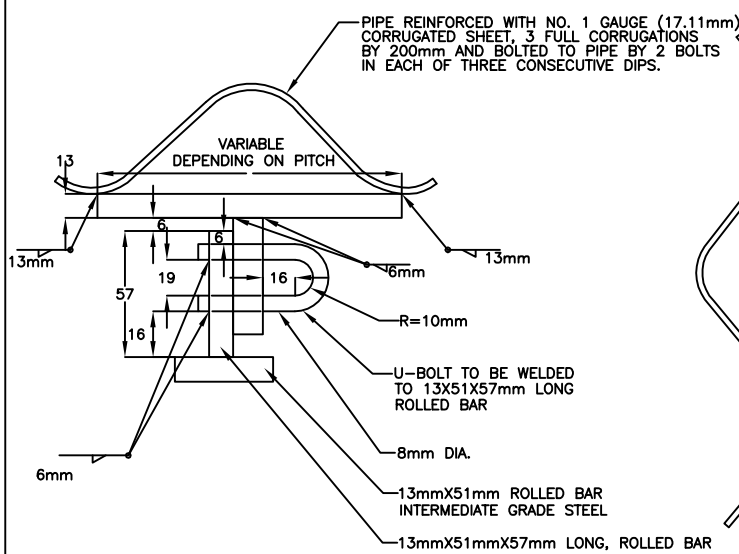
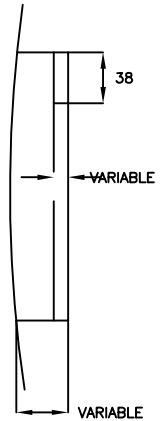


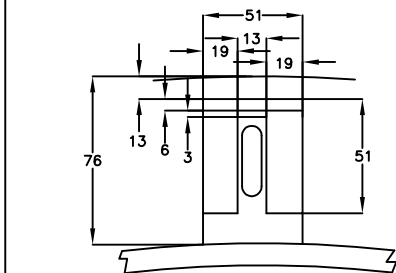
NOTE: BARS SPACED 150mm C.C. AND CENTRE BAR PRODUCED THROUGH ROLLED BAR BY 40mm

SECTION B-B

SECTION A-A



HINGE DETAIL



PITCH OF CORR. METAL PIPE	PITCH OF CORR. METAL PIPE
68	203X57 @ 5.22kg/0.3m
76	229X64 @ 6.08kg/0.3m
152	152X51 @ 5.90kg/0.3m

NOTES

- CORRUGATED SHEET TO BE NO.1 GAUGE (7.11mm) AND BOLTED TO PIP BY 2 BOLTS IN EACH OF 3 CONSECUTIVE DIPS.
- FOR PIPE 2400mm AND OVER GRATE BARS INCREASED TO 25mm. THREE VERTICAL 25mm BARS TO SPAN THE THREE CENTRAL HORIZ. BARS AT 600mm INTERVALS.
- UNLESS NOTED ALL DIMENSIONS IN MILLIMETRES.

INTERNAL GRATE (OUTLETS ONLY)  
FOR CORRUGATED METAL PIPE  
750mm $\phi$  AND LARGER

The Corporation Of The  
**CITY OF  
KITCHENER**



			Scale:	N.T.S.
			Rev. Date:	JUNE 2010
No.	REVISION	DATE	Std. No.:	306