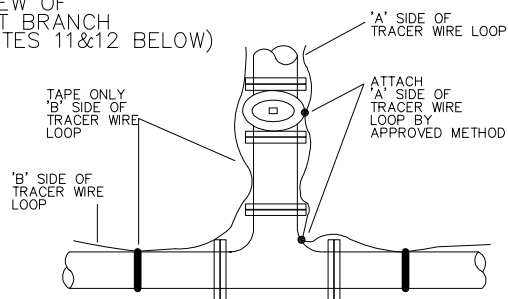


PLAN VIEW OF HYDRANT BRANCH (SEE NOTES 11&12 BELOW)



MANUFACTURED ITEMS LIST

- ① REGULAR 150mm DIA. BARREL USE EXTENSION IF REQUIRED.
- ② MINIMUM DIA. PIPE FOR HYDRANT LEADS TO BE 150mm DIA.
- ③ MINIMUM SIZE M.J. GATE VALVE TO BE 150mm DIA.
- ④ VALVE BOX
- ⑤ USE ANCHOR TEE UP TO AND INCLUDING 450mm DIA.
- ⑥ FOR TEES LARGER THAN 450mm DIA. USE MECHANICAL RESTRAINTS.

NOTES:

1. HYDRANT TO BE SET PLUMB WITH STEM EXTENSIONS TO SUIT DEPTH OF BRANCH. BRANCH TO BE SET LEVEL. EXTENSIONS TO BE INSTALLED BETWEEN UPPER AND LOWER BARREL SECTION. ONLY ONE EXTENSION (MAX. 1.0m LONG) PER HYDRANT. IF MORE HEIGHT IS REQUIRED, THEN A LONGER BARREL SHALL BE USED.
2. ALL BLOCKING TO BE AGAINST UNDISTURBED TRENCH WALL.
3. ALL DIMENSIONS ARE IN MILLIMETERS UNLESS OTHERWISE SPECIFIED.
4. BOND BREAKER TO BE USED BETWEEN CONCRETE AND FITTINGS.
5. CORROSION PROTECTION SHALL BE AFFIXED AS PER STANDARD SPECIFICATIONS FOR WATERMAIN CONSTRUCTION.
6. NO BENDS ON HYDRANT LEADS UNLESS APPROVED.
7. ALL JOINTS TO BE FULLY RESTRAINED FROM HYDRANT BOOT TO TEE (THREADED RODS SHALL NOT BE USED).
8. PLUG DRAIN HOLE IN HIGH WATER TABLE.
9. HYDRANTS SHALL BE CLEAR OF OBSTRUCTIONS FOR A DISTANCE OF 0.6m REAR, 2.0m ON SIDES AND CLEAR TO CURB IN FRONT.
10. TRACER WIRE NOT REQUIRED FOR METALLIC WATERMAIN.
11. 'A' SIDE OF TRACER WIRE LOOP TO BE CADWELDED TO:
 - a) ANCHOR TEE
 - b) HYDRANT VALVE
 - c) HYDRANT BARREL
12. 'B' SIDE OF TRACER WIRE LOOP TO BE TAPED ONLY TO:
 - a) HYDRANT BARREL
 - b) HYDRANT LEAD
 - c) WATERMAIN

STANDARD HYDRANT
INSTALLATION

The Corporation Of The
**CITY OF
KITCHENER**



			Scale:	N.T.S.
			Rev. Date:	JUNE 2010
No.	REVISION	DATE	Std. No.:	203