

5.0 Glossary

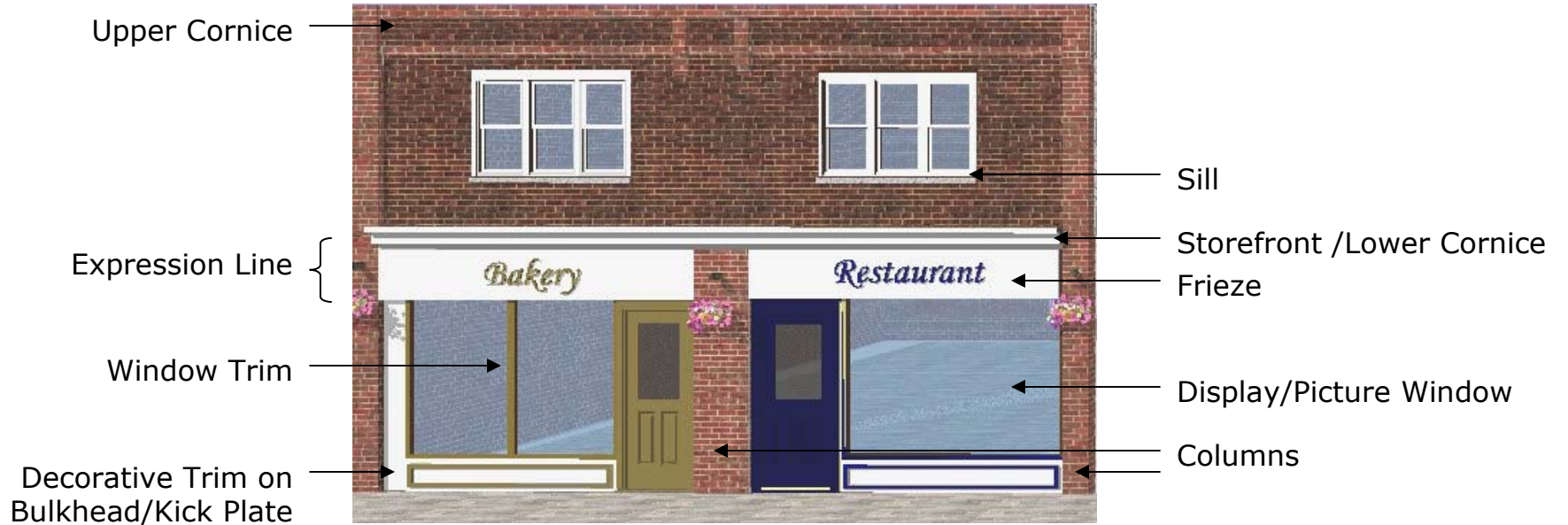
City Centre District Contemporary Design Terms:



**City Centre District Contemporary Design Terms
(continued):**



Market District Traditional Design Terms:



**Market District Traditional Design Terms
(continued):**



Terms:

Bulkhead/Kick Plate: A protective plate located below display windows to protect against damage.

Columns: Vertical pillars or posts that either support building weight or act as purely decoration.

Cornice: Ornamental horizontal moulding that projects out from the façade – often at the top of a building or top of a storefront.

Expression Line: Horizontal elements on the façade (cornice and frieze) used to differentiate between upper and lower floors.

Fenestration: The design and placement of windows in a building.

Frieze: A horizontal band which runs above doorways and windows and below the cornice. The frieze often forms the background for store signs.

Glass Etching: Words or symbols carved or frosted into glass display windows.

Keystone: The central stone in the curve of an arch or vault.

Lintel: The piece of structure over a door or window opening, which supports the weight of the wall above it. Lintels often project out from the façade to create ornamental decoration.

Picture/Display Window: A large, usually single-paned window.

Pilaster: A projecting flat column built into the face of a wall.

Quoin: Dressed stones at the corners of buildings.

Sill: The piece of the structure under a window or door opening

Transom Window: A window set above a door or larger window.