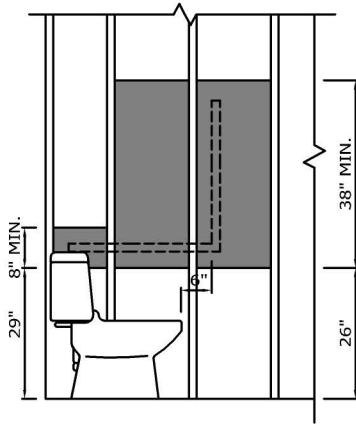


STUD WALL REINFORCEMENT

TO ALLOW FOR THE FUTURE INSTALLATION OF GRAB BARS
(Ref.: Div B, 9.5.2.3.)

ADJACENT TO WATER CLOSET
(Ref.: Div B, 3.8.3.8.(3)(a) and 3.8.3.8.(3)(c))



FUTURE GRAB BARS SHALL BE:

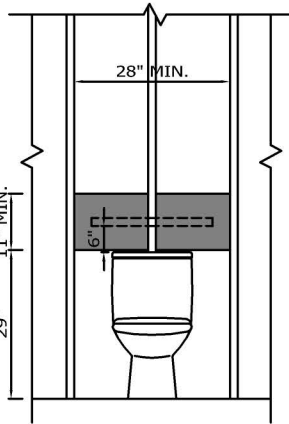
L-shaped, and shall be,

- (a) Vertical component:
 - 30" in length, and
 - mounted 6" from the end of the toilet bowl.
- (b) Horizontal component:
 - 30" in length, and
 - mounted approximately 30" above the floor.

NOTE: GRAB BAR REINFORCING ONLY REQUIRED BESIDE WATER CLOSET IF WATER CLOSET IS LOCATED WITHIN 18" OF THE ADJACENT WALL.

REQUIRED BLOCKING MATERIAL SHALL BE:

- 2x material (ie: 2x4, 2x6 etc...)
- 5/8" plywood or equivalent (not OSB)

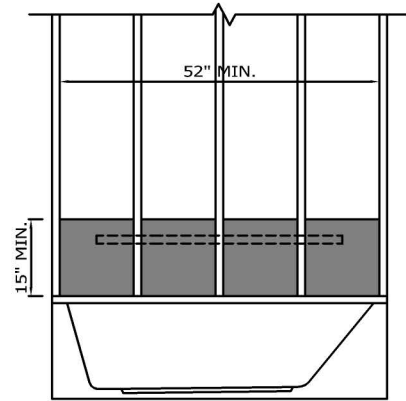


FUTURE GRAB BARS SHALL BE:

- (a) minimum 24" in length, and
- (b) mounted,

- (i) 33"-36" above the floor (tankless), or
- (ii) 6" above the tank.

ADJACENT TO BATHTUB
(Ref.: Div B, 3.8.3.13.(4)(e))

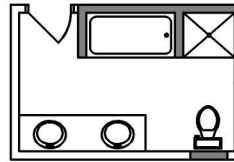


FUTURE BATHTUB GRAB BARS SHALL BE:

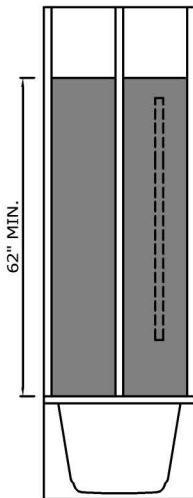
(a) Horizontal component:

- minimum 48" in length, and
- located along the full length of the bathtub, and
- mounted 3"-11" above the rim of the bathtub.

TYPICAL GRAB BAR BLOCKING LOCATIONS:



ADJACENT TO BATHTUB
(Ref.: Div B, 3.8.3.13.(4)(e))

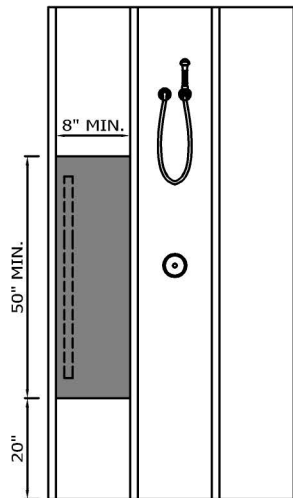


FUTURE BATHTUB GRAB BARS SHALL BE:

(b) Vertical component:

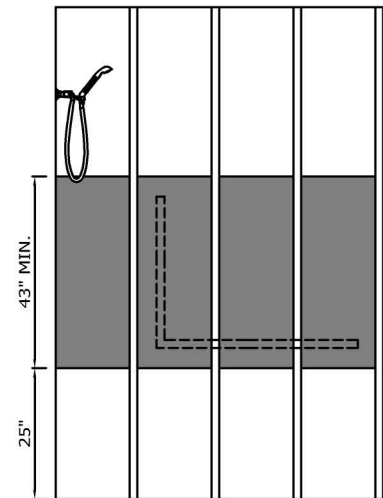
- minimum 48" in length, and
- located at each end of the bathtub, and
- mounted 3"-11" above the rim of the bathtub.

ADJACENT TO SHOWER
(Ref.: Div B, 3.8.3.13.(2)(g))



FUTURE SHOWER GRAB BARS SHALL BE:

- (a) 40" in length, and
- (b) located on the side wall between 2"-3" from the adjacent clear floor area, and
- (c) with the lower end between 24"-25" above the finished floor



FUTURE SHOWER GRAB BARS SHALL BE:

L-shaped, and shall be,

- (a) Vertical component:
 - 30" in length, and
 - mounted 16"-19" from the side wall on which the vertical grab bar is mounted
- (a) Horizontal component:
 - 40" in length, and
 - mounted 30"-34" above the finished floor.



(THIS IS INTENDED FOR ILLUSTRATION ONLY, PLEASE SEE SPECIFIC REQUIREMENTS IN BC DIV. B SECTION 3.8.)

Building Division
STUD WALL
REINFORCEMENT

SCALE:
N.T.S.

DATE:
NOV. 2019

DRAWING NO.:

BF-5